



# Focus

## The Focus Team

Cllr Jenni Ferrans  
 ☎ 07775 926993  
 Cllr Vanessa McPake  
 ☎ 01908 373418  
 Matt Drewett  
 ☎ 01908 630773

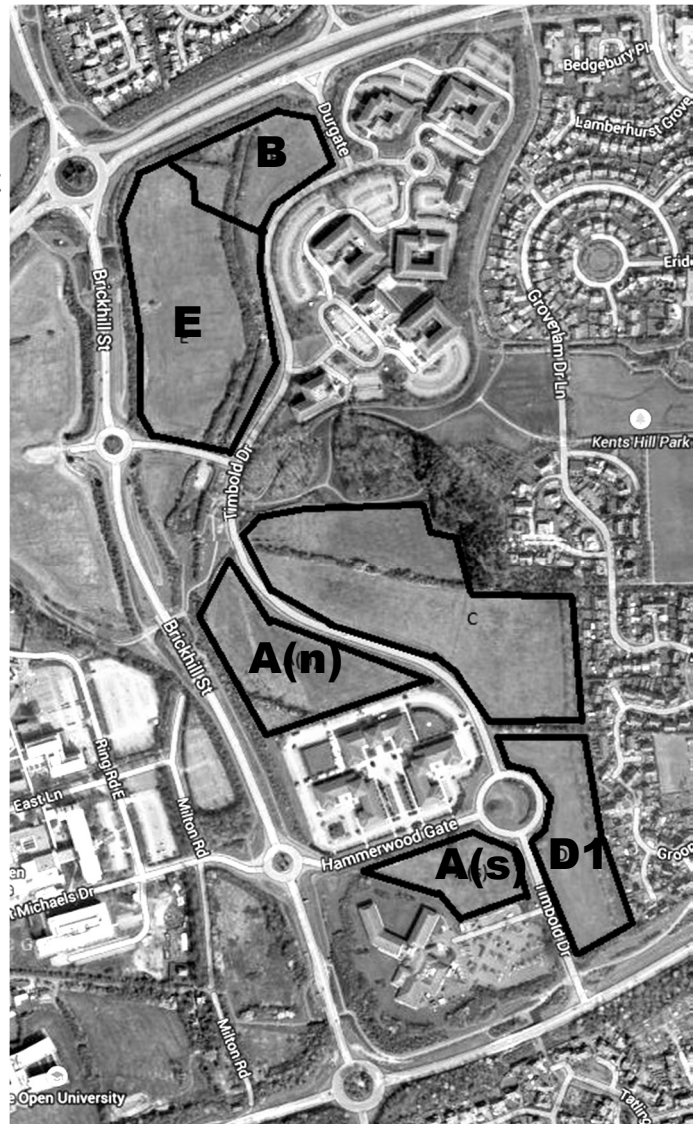
[www.monkston-focus.org.uk](http://www.monkston-focus.org.uk)

Printed, published and promoted by Jenni Ferrans on behalf of the Liberal Democrats, 4 Chetwode Avenue, Monkston, Milton Keynes MK10 9EJ.

## Developments on Kents Hill West Consultation in July

The Council has now decided the outline of its proposals for development on Kents Hill West, and there will be an exhibition and consultation at Kingston Library and Kents Hill School from 30th June to 13th July. The proposals are:

- site B and E - near the Training centre - secondary school to serve the south-central area of Milton Keynes. This might include a special school unit later on
- Site A1 North - in the centre by the V10 - an all through primary school to serve the new housing, plus an extra class in each junior year to take the extra children already here in Kents Hill and Walnut Tree
- Site A1 south—either housing or mixed commercial use. This could include a shop, but it's not clear that it would be viable so close to Kents Hill shop, Walnut Tree centre and Kingston, or perhaps work-from-home units
- Site C and D1—housing at similar densities to the existing Kents Hill housing



## The Exhibition

The consultation will run from 30th June to 13th September but an exhibition will run from Tuesday 30th June to Sunday 13th July in Kingston Library, and on Monday 6th July at Kents Hill School. The planning brief and consultation document is at [www.milton-keynes.gov.uk/consultations](http://www.milton-keynes.gov.uk/consultations)

The Library is open:

Tuesday	10am-6pm
Thursday	11am-5.30pm
Friday	10am-5.30pm
Saturday	9am-1pm
Sunday	11am-2pm

Planning and Education staff and Focus Team members will attend to answer questions on:

Thursday July 2nd	Kingston 2-4pm
Saturday July 4th	Kingston 10-12.30
Monday July 6th	Kents Hill School 6-8pm

**Please come along and have your say!**

# Action & Service All Year Round

# Schools, Schools and More Schools!

## Why Expand Schools Here?

The need for primary school places in our area has grown, as the initial residents, whose children have grown up, have moved on, and new young families have moved in.

**30 more children** in each year group now live in **Kents Hill and Walnut Tree** than a few years ago!

## What is Proposed? - Primary

Heronshaw infant school has expanded to take the children, but Heronsgate junior has not, and the Council has now decided to use the school site on Kents Hill West to build a new school, that will provide for both these children, and the extra children from the new housing coming on Kents Hill and nearby on Walton.

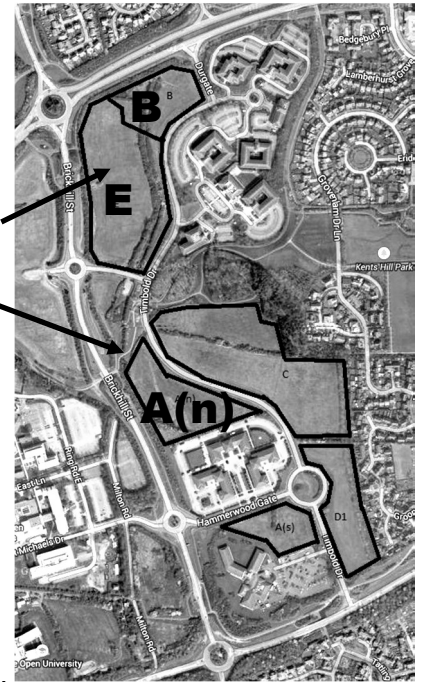
The extra children need a school in September 2016.

MK Council is talking to the schools locally who will have room to take the extra class for one year. The aim is to appoint the Head and the initial teachers for the new school, and open in an existing building for one year. Then in 2017 the first phase of the new school will open - the junior school part - and the staff and pupils will move to the new school.

As the new houses are built, the infant school part will open, and the junior school part will expand. Places will be open to any child in the area, but the new housing will be the closest and so will get priority. If even more young families move into the area, there will be room to expand the school further, but only if there are more places needed in this area.

**Secondary School:** Walton High has enough room to take the extra children - it is taking children from outside the area at present - and it has room to expand further if necessary.

But Milton Keynes also needs a new secondary school, for the south-central area of the city - just beyond the river. They have expanded their primary schools, but there is no room to expand the secondary school, and no site left to develop in that area.



Secondary  
Primary

So the Council are proposing to build a new Secondary school on sites E and B on Kents Hill West to take those children. There may be some spaces left to take children from our area. They want to know your views on that. The school will open in 2017.

## Can we see the Plans?

There are no plans yet. The exhibition will be about the Development Brief. This decides things like where the access points will be, roughly what density housing will be, where the school buildings will be, and what will be between the existing housing and the new houses. After that, plans will be drawn and you will be able to comment on them.

Please come along and have your say. What's decided at this stage can't be undone later!

## LIBERAL DEMOCRATS KEEP YOU INVOLVED

If you would like to be kept up to date on what is happening on these developments, please email Jenni Ferrans.



**Jenni Ferrans:** 07775 926993  
J.ferrans@mklibdems.co.uk



**Matt Drewett:** 01908 630773  
m\_drewett@talk21.com



**Vanessa McPake:** 01908 373418  
Southcentralld@btconnect.com

Or write to: **Monkston Focus,**  
**c/o FREEPOST RSLR-SSHC-GKUS MK16 0BW**  
Or visit: **www.monkston-focus.org.uk**

Data Protection Act. If you reply to us the Liberal Democrats and their elected representatives may use the information you've given to contact you. Some contacts may be automated. You can opt out of communications at any time by contacting us.

# Listening to Your Views